

RECONSTRUCTION PLAN

TO: WISDOM'S-HOUSE TEAM USA

FROM: WISDOM'S-HOUSE TEAM MALAWI.

RECONSTRUCTION

OUTLINE

1. INTRODUCTION

2. RECONSTRUCTION PLANS

3. CONCLUSION

1. INTRODUCTION

The Scriptures have been the only reliable solution to all Human challenges. Proverbs 16:3 highlights how important to commit our plans to the Lord. James the servant of the Lord Jesus said , “For that ye ought to say, If the Lord will, we shall live, and do this, or that “ (Jas 4:15).

The start of the cyclone was so beautiful with some little rains falling while everyone prepared for their next day endeavors. Soon it became a nightmare when the cyclone began to overturn people's plans for the week. Not only plans were disturbed, but thousands of lives left homeless. Hundreds of them died. The cyclone left people in poor status without food and homes.

Wisdom's-house.com is concerned about the destruction of cyclone Freddy, since our mission work is teaching fathers in Phalombe the value of allowing the Lord Jesus to guide us in building our spiritual and physical houses.

When reports of the devastation of cyclone Freddy came to us, we fell to our knees before the Lord knowing we have no other help than Him. God has been comforting us in all these things. Like Nehemiah when the news of the city in Jerusalem came to him, he did not just pray but he made a plan of reconstruction. The Lord granted him favor for the rebuilding the walls of Jerusalem.

We know the Lord is teaching us lesson of making a house on the rock, the house which shall stand even when wind and storms surge. Even during this moment of sadness and loss, we can see the Lord giving us an opportunity to grow our unity in love towards each other to make things happen. The reconstruction and the restoration effort take oneness of the team in love. The reconstruction plan will follow the Five P's of progress pattern that is described by Stephen in Acts 7:44. The Lord instructs [Christian leaders to follow a similar blueprint for all of our endeavors.](https://wisdoms-house.com/?p=13) (https://wisdoms-house.com/?p=13)

According to the Apostle Paul, all Christians are co-workers laboring in the construction of buildings using blueprints given by the Lord himself. The foundation of the buildings we construct is the Lord Jesus. (1Cor3:9-23, Psalm 127:1-2). We believe this is the time the Lord instructs us to be doers of His word, leading by example.

2. RECONSTRUCTION PLAN

This plan will follow the pattern of the Five P's of progress. It represents the Throne of Grace where we obtain mercy and find grace in time of need (Heb 4:16). Where our purpose will be to follow the teachings of Jesus (Matt 7:24-29). The preparation will be from His word. We aim to practice what we preach and to praise Him for all progress in everything (1Cor3:7). It's our sincere desire to encourage teamwork and a

spirit of compassion to execute this plan, We know that people are struggling already to feed themselves, they need a unity to come up with the best outcome and to make the reconstruction easy.

Purpose:

We want to rebuild homes with a strong foundation to avoid repeat of cyclone Freddy. We will use passages of build a strong foundation in Matt 7:24-29 and Luke 6:46-49 as a guide. The reconstruction of the fallen homes is to provide better houses that are strong from season to season. We aim to do what it takes to rebuild structures that can stand during heavy rain and wind.

Plan

We will use some blueprints to allow a coordinated effort with like-minded participants. Unity is the way to go in terms of development having one voice, one purpose. Taking from the biblical picture of the ants in a colony with a hardworking spirit (Prov 6:6-10) to make things happen and to prepare for the future.

Preparation

We will gather materials such as bricks that were washed away and any donated materials to start the construction. We will work as teams instead of as individuals. The reconstruction needs few items that the owner may provide. The team will determine the pace to rebuild by checking items he/she has available. Team members will find ways make the structure strong based on materials available. The Lord willing, donated materials may be a means others will sacrificially give towards this effort.

The readily available materials based on the research are.

- Team to work

Man power is Available

- Bricks.

Burnt to some and non burnt.

- Sand
- Land to build
- Pole for roofing

Needed items

There are items that can need the well wishers to donate so that the structures should be strong and long last. For a prototype house the following are the materials that need help:

- Cement 20 bags @\$15 = \$300
- Iron sheets size 12feet, 26 @ \$13 = \$338
- Brick force wire 10 rolls @ \$8 = \$80
- Nails

5Kgs of 4 inch @ \$3.5 = \$14

2kgs of 3 inch @ \$3.5 = \$7

3Kgs roof nails @ \$ 4.5 = \$18

- roof wire 5Kgs @ 3.5 = \$17.5

Making a Total of \$774.5 donation toward a house

Note

Among the group, we have two old widows who have no burnt bricks and cannot manage to produce one if well-wishers can help with the firewood to burn then since the teams are willing to mold the bricks, donation can be 2 trips of woods @ \$45 = \$90 in addition to the \$774.5 making \$864.5.

Practice

We will start with one prototype house to develop our skills needed to build other houses. We will train those that are willing to learn. We will avoid freeloading (Deut 23:24-25). Every member must provide his or her skill for example those who are builders, those that can mix the slime, some bringing water for use, carpenters, landscapers all must be involved in work and those that are without the related skills should be willing to be trained. Still others can cook food to provide meals for the workers.

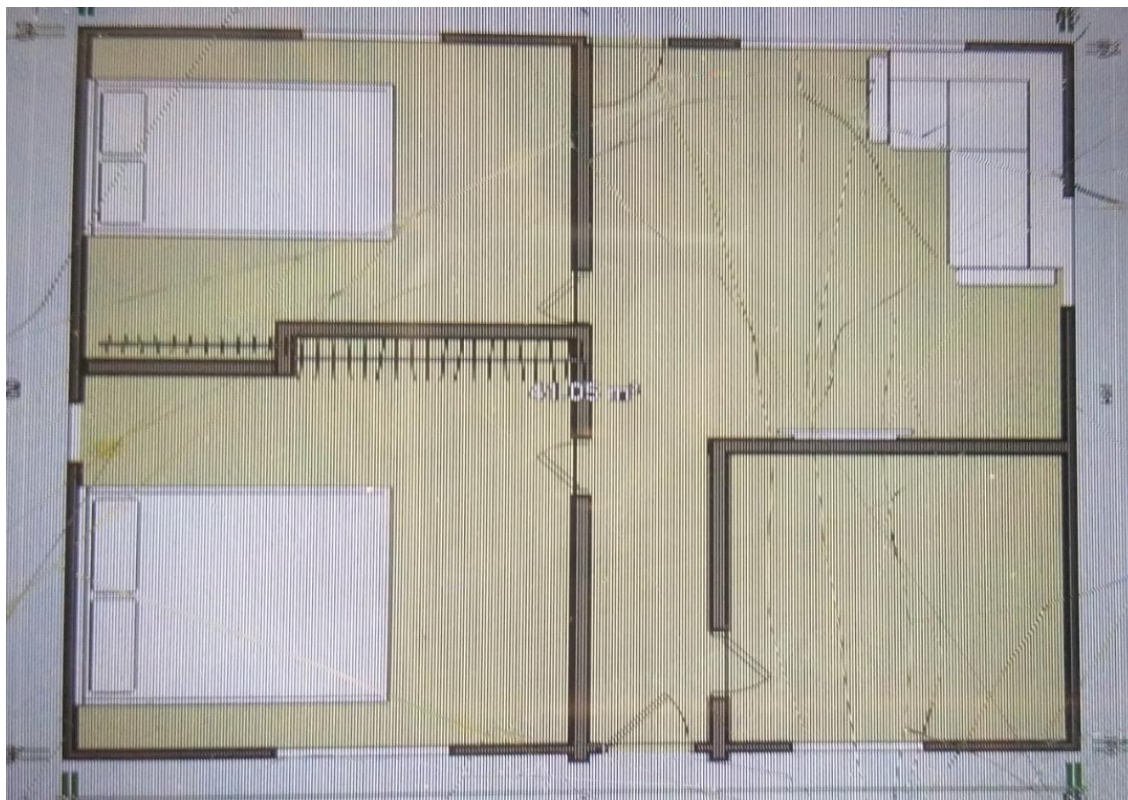
Progress

We will make progress little by little by adhering to our corporate plan, the continuation from one house to another until all houses are reconstructed in the same design as the prototype house.

3. CONCLUSION

Except the LORD build the house, they labor in vain that build it: except the LORD keep the city, the watchman wakes but in vain Psalm127:1. All our reconstruction plans seek the leading of God's Spirit as the Chief Architect of the whole process that the work might bring back the glory to the Lord Our Savior.

The following of the Five P's will help the monitoring of every step until all is executed. Below is a prototype house pencil sketch







Floor Plan Creator

Marcin Lewandowski

Contains ads • In-app purchases

Uninstall

Open

What's new

Last updated Feb 27, 2023



- * Automatic conversion between lower and upper kitchen cabinets can be turned off.
- * Improved zoom precision in 3d....

Rate this app

Tell others what you think



[Write a review](#)

Developer contact



Join the beta

Try new features before they're officially released and give your feedback to the developer. Certain data on your use of the app will be collected and shared with the developer to help improve the app.



[Join](#)



[Learn more](#)



The above screenshot is the phone application we used to design the 3D house